

Union Corporate Center

The "Premier" Business Park in the St. Louis Metro area

An Affordable 140-acre Business Park Union, Missouri



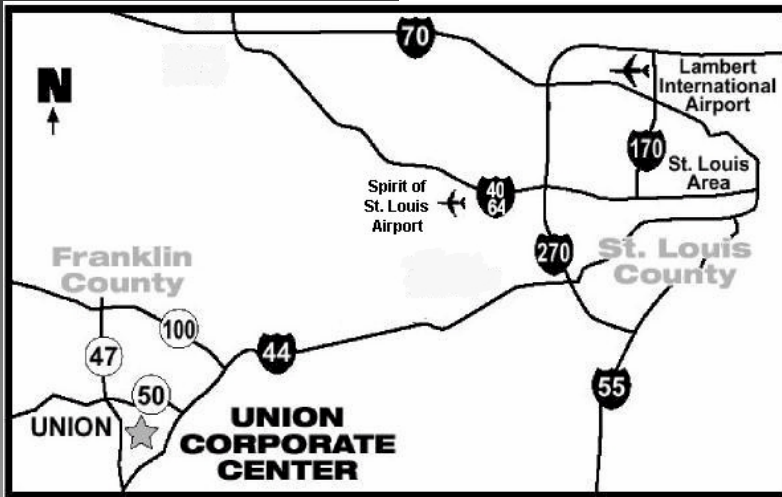
- Located 45 minutes southwest of downtown St. Louis
- Direct Access to U.S. 50 and 3.5 miles to I-44
- Customized training available at East Central College
- Multiple sites to accommodate immediate and future needs
- All utilities (water, sewer, gas, electric) within park
- Very competitive labor rates
- Recognized as one of the "premier" industrial parks in the St. Louis Metropolitan area by St. Louis Regional Chamber & Growth Association and AmerenMissouri
- Union is home to numerous world-class industries, including: Rexam, Esselte, Pharma Tech and Spartan Showcase (Leggett & Platt)



500 E. Locust Street
Union, MO 63084
Phone: 636-583-3600
Cell: 314-808-3395
jgraves@unionmissouri.org
www.unionmissouri.org

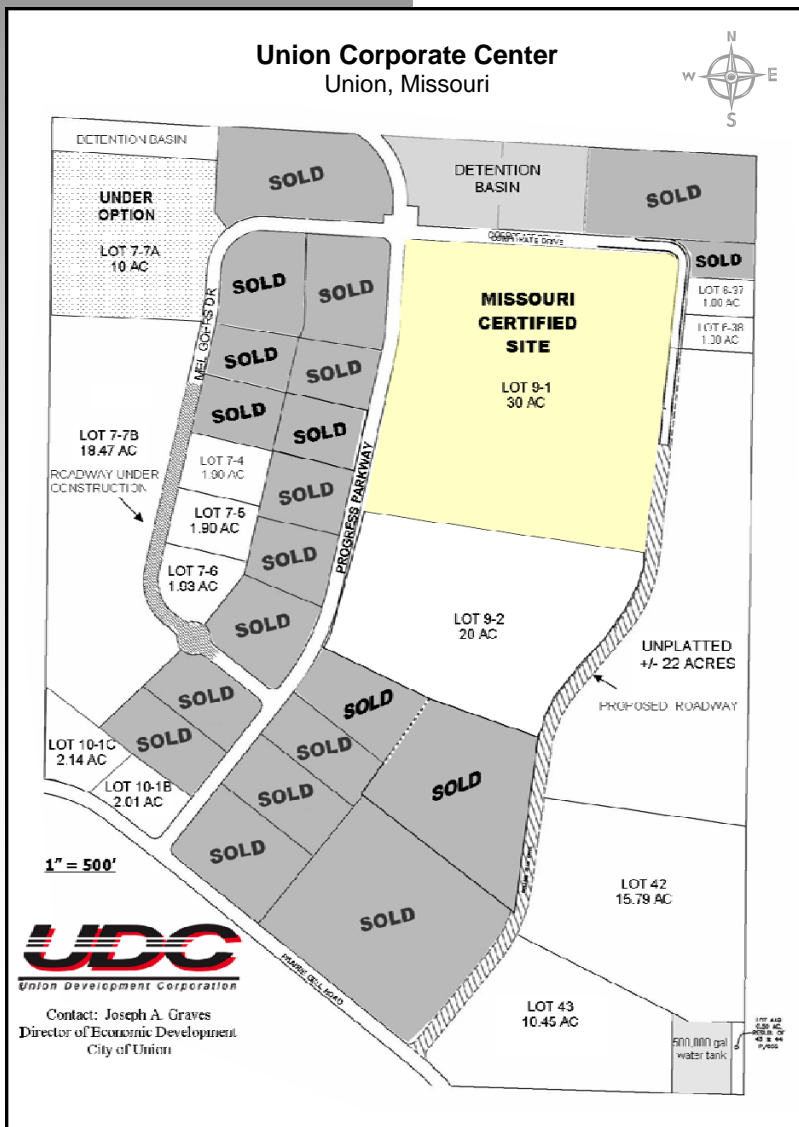
Contact: Joseph A. Graves
City of Union
Economic Development Director

Union Corporate Center



Union is home to ...

- A Pro-Business Attitude within City Government
- A Quick and Uncomplicated Permitting Process
- A Complete Workforce Availability / Quality Survey (Available Upon Request)
- Over 10,000 Residents
- East Central College (4,500 Students)
- County Seat of Franklin County with Over 100,000 Population
- Over 50 Companies, Including:
 - Esselte Corporation
 - Rexam Containers
 - American Plastics
 - Pharma Tech Industries, Inc.
 - Spartan Showcase
 - The Children's Factory and more!



500 E. Locust Street
Union, MO 63084

Phone: 636-583-3600

Cell: 314-808-3395

jgraves@unionmissouri.org

www.unionmissouri.org