



Missouri Certified Site

St Certified Site in the
St. Louis Metropolitan Area

Lot 9-1
30 Acres
Certified Site

A Missouri Certified Site is **Shovel Ready** and includes the following documents:

- Phase I Environmental Study
- Geo-Technical Studies
- Topographical Analysis and Maps
- Industrial Quality Infrastructure
- Boundary Survey
- Wetlands Delineation Map
- Floodplain Boundaries
- Archeological Findings
- Threatened or Endangered Species Review
- Additional Supporting Documentation

Partners in Economic Development



Developed by:



Union Development Corporation

City of Union, Missouri
Department of Economic Development
500 E. Locust • Union, Missouri 63084
Tel 636.583.3600 Cell: 314-808-3395
WWW.UNIONMOED.COM

Union Corporate Center FAST FACTS

Location:

Progress Parkway
Franklin County, Union, Missouri 63084

Conveniently located 45 minutes southwest of downtown St. Louis

Site Details:

Acres: 30
Topography: Gently Rolling
Zoning: Light Industrial
Additional Acreage Available: 20 Adjacent, 140 within park

Transportation:

Accessible via US Highway 50 and Progress Parkway
3.5 Miles West of Interstate 44

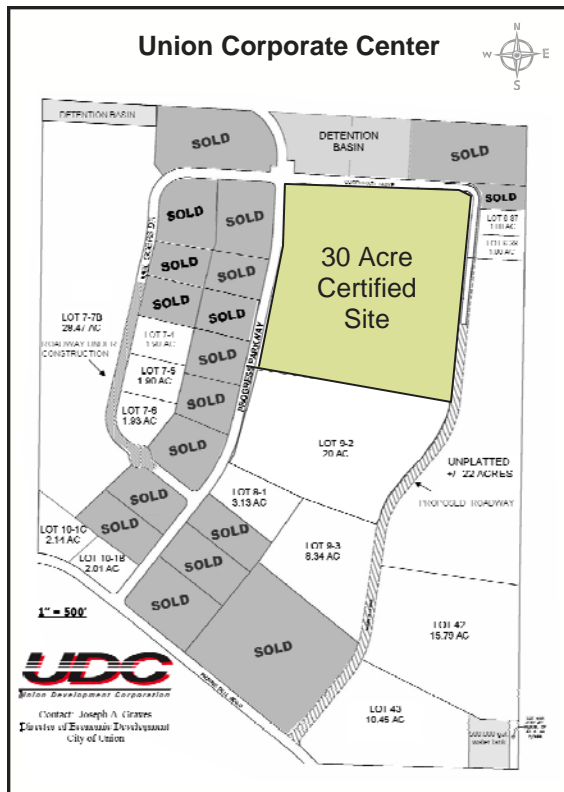
Utilities:

Electric: AmerenMissouri (12.470 kV)
Natural Gas: Missouri Natural Gas (6" line)
Water: City of Union (12" line)
Sewer: City of Union (8" line)
Telecommunications: AT&T (Fiber Optic, T1, DSL)

Population:

Union—10,204 Franklin County—101,492

Union was the fastest growing city in Franklin County, growing by 32%, 2000-2010



Union is home to ...

- A Pro-Business Attitude within City Government
- A Quick and Uncomplicated Permitting Process
- A Complete Workforce Availability / Quality Survey (Available Upon Request)
- Over 10,000 Residents
- East Central College (4,500 Students)
- County Seat of Franklin County with Over 100,000 Population
- Over 50 Companies, Including:
 - Esselte Corporation
 - Rexam Containers
 - American Plastics
 - Pharma Tech Industries, Inc.
 - Spartan Showcase (Leggett & Platt)
 - The Children's Factory and more!

People say the nicest things about doing business in Union.

“...From energy rates, transportation, taxes and everything in-between, we have found Union, MO to be a first rate place to conduct our global business...”

Rob McCoy, President
REXAM Containers



Union Corporate Center is recognized as one of the “premier” industrial parks in the St. Louis Metropolitan area by St. Louis Regional Chamber & Growth Association and AmerenMissouri.

Union Development Corporation
500 E. Locust • Union, Missouri 63084
Tel 636.583.3600 Cell: 314-808-3395
WWW.UNIONMOED.COM

