

Sharing In Success

Issue 6, January 9, 2007



500 East Locust St. • Union, Missouri 63084 • ph 636-583-3600 • email: development@ci.union.mo.us • website: www.unionmoed.com

Union Corporate Center

In the mid-90's, the City of Union assisted the Union Development Corporation in purchasing 242 acres of prime farmland just south of U.S. Highway 50 on the eastern side of the community to develop as a major new industrial park close to Interstate 44.

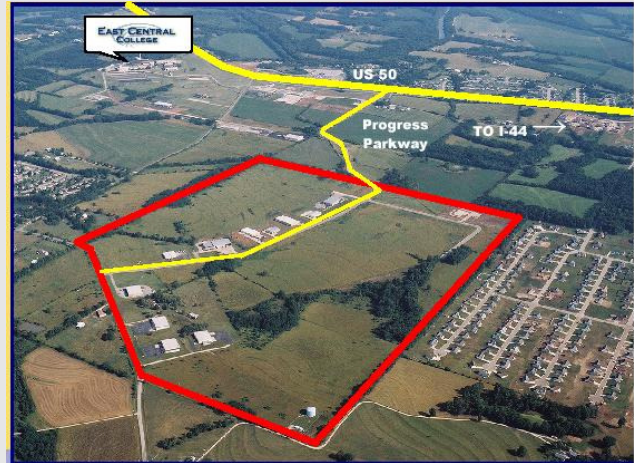
Today Union Corporate Center is considered one of the "premier" industrial parks in the St. Louis Metropolitan area by top officials at St. Louis Regional Chamber & Growth Association and AmerenUE.

Progress Parkway, will eventually link Union Corporate Center with U.S. Highway 50 with a MO-DOT approved signalized intersection. All public utilities including Missouri Natural Gas and AmerenUE are currently within the park.

Listing itself as "an affordable new business park in the heart of growing Franklin County," the park offers approximately 170 acres of developable land within 3.5 miles of Interstate 44. A lease/purchase option and other incentives are possible through the Union Development Corporation.

Current tenants and developments at the Union Corporate Center include: Corro-Tech, Frueh Services, Union Machinery, Thebeau Construction, Weber Construction, Carson Furniture, Friction Technologies Corp, Sieve Contracting and Mentz Foundations. Turn Key Tool & Die has purchased a lot to accommodate future needs.

For more information about Union Corporate Center, call the Union Development Corporation at 636-584-0033 or 314-808-3395. You may also send an email to josephgraves@unionmoed.com or development@ci.union.mo.us.



If your company or business has an event, has won an award or would like to be featured in "Sharing in Success," contact Joseph Graves or Wanda Parsons at development@ci.union.mo.us or call us at 636-583-3600.



Rexam Expansion well under way



P&A Drywall moving earth



Union High School gymnasium addition on target

IMO'S
PIZZA
The Square Beyond Compare



NOW OPEN!

IMO's Pizza is now open at 1612 Denmark Road in Union. Hours are Monday-Thursday, 10am-10pm, Friday & Saturday, 10am-12am and Sunday 11am-10pm. They offer dine in, carry out and delivery.

583-IMOS (4667)

"Union, MO...The Possibilities Are Endless"

HAPPY NEW YEAR

If you wish to be removed from our mailing list, just send an email to wparsons@ci.union.mo.us with "unsubscribe" in the subject line.